

## Guide-Lite low location way guidance

Guide-Lite is a low location emergency lighting system, which is complementary to emergency lighting placed at higher levels.

In many circumstances it is advantageous to have both high and low level emergency lighting for better way guidance to the final exit. Low-level lighting is especially relevant during a fire situation. Hot smoke from a fire tends to rise to form a hot layer, which builds from the ceiling down. The natural human reaction is to crouch closer to the floor where it would be cooler. Even in a familiar building layout, without light, disorientation and panic can easily takeover. In such circumstances, low-level emergency lighting comes into its own for both reassurance and guiding the way to an exit.

### The principle of Guide-Lite

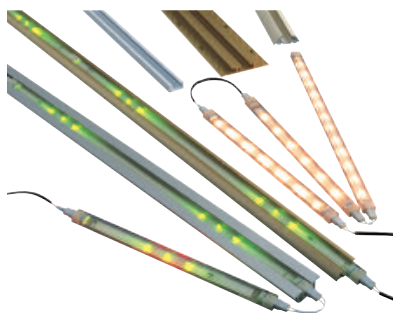
To avoid the dangers of hot smoke inhalation in a fire situation, evacuees instinctively crouch lower to the floor whilst seeking an exit. In these circumstances, Guide-Lite low location lighting complements high level emergency lighting by providing the necessary effective illumination and way guidance, further facilitating evacuation of the premises.



After 15 seconds



After 30 seconds



Guide-Lite LED range of low-level emergency lighting

### Benefits of Guide-Lite

Guide-Lite is a system that gives enhanced safety:

- The system is effective in both smoky and non-smoky situations
- It can be activated by a signal from a fire alarm system, as well as mains failure
- Evacuation time can be reduced using the system
- Evacuees are less likely to panic if they can see where they are going (independent research)
- Low location lighting is an effective means of providing illumination for evacuation
- Guide-Lite is a modular system enabling great flexibility: A kit of products can be arranged for most building layouts and styles
- Guide-Lite strip light source sections are robust and sturdy. The GBD LED version gives optimum light visibility through 180 degrees
- Fire fighters have clearer access into the building
- Better direction for a partially sighted person
- Long life and low running costs
- An LED light source has a life expectancy of over 50,000 hours, while using a fraction of the energy a fluorescent lamp will use

## Applications of Guide-Lite

In recent times legislation governing the operation of passenger vessels at sea has made it mandatory to fit low-level emergency lighting.

The type of product is certainly suited to spaces where the public or those not familiar with the surroundings are gathered or moving about. On board ship where there are many passageways and stairways looking the same the system provides an ideal solution. On dry land, although legislation does not currently call for such a system to be used, the places where the system can be applied are many and varied.

Complexes with many passageways, auditoria with staircases, buildings of multiple occupancy are all typical examples where Guide-Lite could be used, including:

- Cinemas & theatres
- Lecture theatres
- Hospitals
- Hotels
- Sheltered accommodation
- Tunnel complexes

## Emergency lighting scheme design and the Guide-Lite system

From a survey or from a set of scale drawings we can prepare a low location system scheme using the building blocks of the modular system:

- Power supply operating at 24v
- Extruded housings for the light source to be mounted on the wall or the floor
- Light source modules
- Directional signs and indicators
- Connectors, spacing sections and end caps

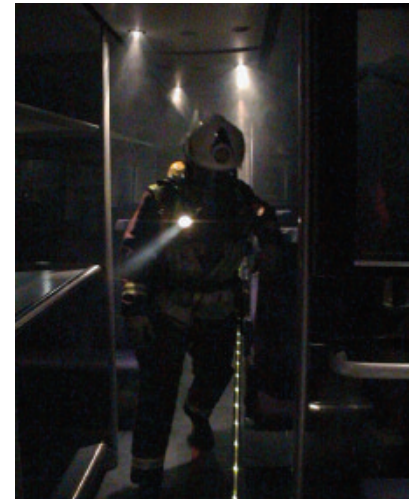
### SPECIFICATION

<b>Supply</b>	24Vdc
<b>Standard light source (GBD**)</b>	3 set LED modules set can be plugged together to produce an LED array. LEDs are housed in UV stabilised polycarbonate. Three basic lengths: 260mm, 560mm & 1160mm are available. (GBD**)
<b>Aluminium extrusions</b>	A selection of aluminium extruded housings (2.4m length) are available to take the LED modules. Formats available for mounting to: Wall, floor, skirting board, carpet edging and stair nosing. Durability: Normal foot and soft tyre
<b>High output light source</b>	12x LED module (GWDH12)
<b>Directional module</b>	10x LED module in arrow head format (SCDA/R/2)
<b>Connectors, spacers &amp; end caps</b>	Spacers, end caps in fire retardant polycarbonate. Plugs in glass reinforced polycarbonate
<b>Power supply</b>	A range of 24Vdc power supplies from 100w to 720w up to 3 hour duration, NM or M, is available. Mains input 230 – 240V 50hz

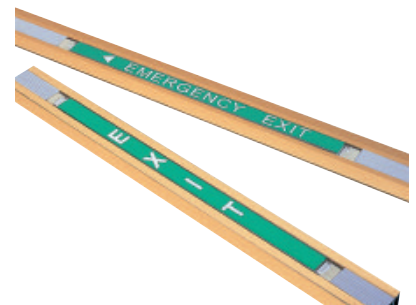
## Scheme design and product selection

If you have interest in specifying a Guide-Lite emergency lighting system, please contact our Technical Sales department. We will arrange for a field sales representative to get in touch to discuss your requirements.

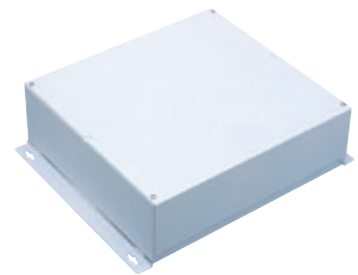
A scheme can be prepared, with quotation, full product listing and specification following a project meeting with survey or the provision of detailed drawings.



Guide-Lite low-level lighting offers significant safety advantages, providing effective way guidance for both evacuees and emergency personnel



Guide-Lite indicator modules



Guide-Lite power supply unit